

DEWALT - DCF6201 Cordless Collated Magazine Attachment



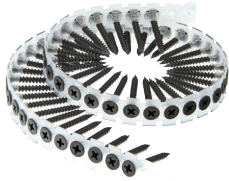
- Screw length adjustment button (1" - 2" capacity)
- Disassembly release button (for occasional blow-out/cleaning)
- Screw length detent marks and screw drive depth gauge
- Collated screw strip guide
- Magazine attachment release buttons

Mounts to DeWALT DCF620
20v MAX* XR Li-Ion Brushless
Drywall Screwgun

Compatible with SENCO and HILTI collated screws.

COLLATED SCREW SELECTION

Compatible with DeWalt, SENCO, and HILTI tools.
Contact TFC for specific applications.



50 Screws
Per Strip

1,000 Screws
per Master
Carton



COARSE | Wood

Length	Dia	Qty.Box
1 1/4	#6	1000
1 5/8	#6	1000
2	#6	1000

Available Finish

Interior: Plain Finish
Exterior: TRI-SEAL® Coated (option)



FINE | Wood or Steel < 20ga

Length	Dia	Qty.Box
1 1/4	#6	1000
1 5/8	#6	1000
2	#6	1000

Available Finish

Interior: Plain Finish



SELF-DRILL | Steel < .175"

Length	Dia	Qty.Box
1 1/4	#6	1000
1 5/8	#6	1000
2	#6	1000

Available Finish

Interior: Zinc Plated
Exterior: TRI-SEAL® Coated (option)



SELF-DRILL | Steel < .175"

Length	Dia	Qty.Box
3/4	#10	1,000

Available Finish

Interior: Zinc Plated



SELF-DRILL | Wood to Steel <.210"

Length	Dia	Qty.Box
1 3/4"	#12	1,000

Available Finish

Zinc and Yellow Plated

Many other sizes and types are available.
Contact TFC with your specific application and we will assist you in choosing the best screw for your application.

Performance Characteristics

Pullout Loads in Metal Studs Average Ultimate in Pounds (Calculated Values in Accordance to AISI S100 | Section E4)

Size	26 Ga. (.018")	25 Ga. (.021")	24 Ga. (.024")	22 Ga. (.030")	20 Ga. (.036")	18 Ga. (.048")	16 Ga. (.060")	14 Ga. (.075")	12 Ga. (.105")
#6-15 GP	107.1	125.0	142.8	178.5	214.2				
#6-20 DP2					214.2	285.6	357.0	446.3	624.8
#7-16 GP	118.6	138.3	158.1	197.6	237.2				
#7-16 DP2					237.2	316.2	395.3	494.1	691.7
#8-15 GP	126.2	147.3	168.3	210.4	252.5				
#8-18 DP2					252.5	336.6	420.8	525.9	736.3
#10-12 GP	145.4	169.6	193.8	242.3	290.7				
#10-16 DP3					290.7	387.6	484.5	605.6	847.9

Pullout Loads in Wood Average Ultimate in Pounds

Size	Embedment in 2 x 4 Wood Stud (SYP)			
	1/2"	3/4"	1"	1-1/4"
#6-15 GP Fine	160	290	400	586
#6-10 GP Coarse	182	328	422	620
#7-16 GP Fine	172	288	408	590
#7-9 GP Coarse	189	318	440	630
#8-15 GP Fine	179	278	490	651
#8-15 GP Coarse	186	290	502	645

Corrosion Resistance

Phosphate	10 hrs salt spray
Zinc Plated	24 hrs salt spray
*Tri-Seal	1,000 hrs salt spray

Steel Tensile : 50 Ksi

DISCLAIMER: All information is non-binding and without guarantee. Before using the products, all specifications and calculations must be checked by a suitably qualified person and local regulations must be observed. This document is subject to revision. We reserve the right to make technical changes. (0321-1)