

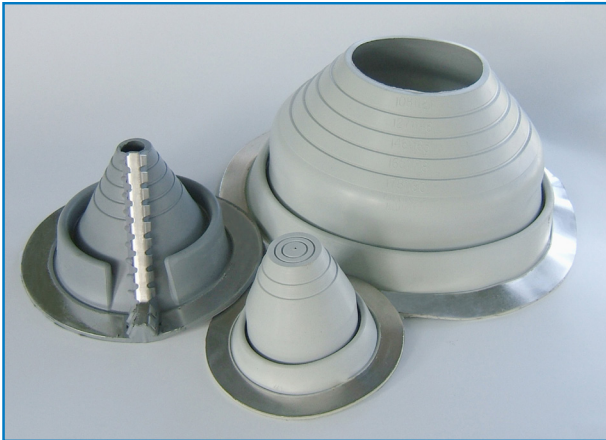
PIPE MASTER

METAL ROOFING PIPE FLASHING



PIPE-MASTER PIPE FLASHING

Standard Applications



- Flexible, weather resistant EPDM rubber or silicone.
- Aluminum base is flexible to conform to any panel profile
- Grey EPDM is ozone and ultraviolet resistant

Pipe Size Outside Diameter	Flash Number	Flashing Details	TFC Part Number	Number of Fasteners
1/4" - 2 1/2" EPDM	#1	Top Opening Diameter: Closed Overall Height: 2.77" Base Diameter: 4.75"	001DEKR	10
1 3/4" - 3" EPDM	#2	Top Opening Diameter: 1.44" Overall Height: 3.53" Base Diameter: 6.21"	002DEKR	13
1/4" - 5" EPDM *Silicone	#3	Top Opening Diameter: Closed Overall Height: 3.64" Base Diameter: 7.74"	003DEKR 003DEKS	16 16
3" - 6 1/4" EPDM	#4	Top Opening Diameter: 2.38" Overall Height: 5.05" Base Diameter: 9.26"	004DEKR	19
4 1/4" - 7 3/4" EPDM *Silicone	#5	Top Opening Diameter: 3.50" Overall Height: 4.43" Base Diameter: 10.75"	005DEKR 005DEKS	22 22
5" - 9" EPDM	#6	Top Opening Diameter: 4.25" Overall Height: 5.60" Base Diameter: 12.50"	006DEKR	26
6" - 11" EPDM	#7	Top Opening Diameter: 4.90" Overall Height: 5.84" Base Diameter: 14.60"	007DEKR	30
7" - 13" EPDM *Silicone	#8	Top Opening Diameter: 5.80" Overall Height: 7.53" Base Diameter: 16.5"	008DEKR 008DEKS	35 35
9" - 19" EPDM *Silicone	#9	Top Opening Diameter: 7.45" Overall Height: 8.09" Base Diameter: 25.25"	009DEKR 009DEKS	54 54
15" - 24" EPDM *Silicone	#10	Pipe Size: 15"-24" Diameter (Square Base only)	010DEKR 010DEKS	148

Note: #1 and #3 are closed top. When flashing a steep pitch roof greater than 20° or a profile with a rib height of 1-1/2" or more, use the next larger flashing for increased flexibility.

Fastening Recommendation



Corrosion resistant fasteners should be used around the base one every 1-1/2 inches as per the United Plumbing Code (UPC) recommendations. Refer to size chart for the quantity to use.

Fastener

1/4-14 x 1-1/8" DP1 BLAZER Stainless Cap Head with VRT Technology



PIPE-MASTER™ RETRO

Use in retrofit applications
Gray or Black EPDM and Silicone

PIPE SIZE	US PART NUM	FLASHING DETAILS
#1	3/4" - 2-3/4"	Black RF 101 BS Gray RF 101 GS Silicone RF 102 RD
		Opening diameter 3/4" Pipe size 3/4" - 2-3/4" Base dimensions 6 -3/10"
#2	2" - 7-1/4"	Black RF 201 BS Gray RF 201 GS Silicone RF 202 RD
		Opening diameter 2" Pipe size 2" - 7 -1/4" Base dimensions 10 -3/4"
#3	3-1/4" -10"	Black RF 301 BS Gray RF 301 GS Silicone RF 302 RD
		Opening diameter 3 -1/4" Pipe size 3 -1/4" - 10" Base dimensions 14 -1/2"



Sealant Recommendation

Ultra 1000® or APS 500 sealant should be used under the base to assure a proper seal. If you prefer, additional sealant can be applied around base after installation.

Available COLORS

Brown

Black

Dark Grey

Light Grey

White

Dark Green

Light Green

Dark Blue

Light Blue

Bright Red

Terra Cotta

Available in 11 colors to match your roof!

Sizes

#3 - Pipe diameter 1/4" to 4"

#5 - Pipe diameter 4 1/4" to 7 3/4"

Material: EPDM

Material Specifications

	EPDM	Silicone
Advanced Ozone Resistance	70 hours @ 500 ppm	70 hours @ 500 ppm
High Temperature Resistance		
Intermittent	+135° C (275° F)	+260° C (+500° F)
Continuous	+100° C (212° F)	+225° C (+437° F)
Low Temperature Resistance	-55° C (65° F)	-74° C (-100° F)
Tensile Strength (min)	10 MPa (1450 psi)	5 MOPa (700 psi)
Compression Set (max)	25%	50%