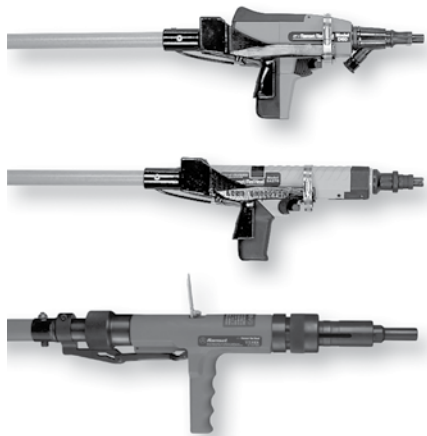




Use with Twister Pre-Tied Wire!



Can be used with various Ramset actuated tools

Extension Poles

Quality Ramset extension poles provide the convenience of using powder actuated tools for overhead fastening without the need for scaffolding or ladders.

Part Numbers For Ramset Tools

PTSEMI6 (6') and PTSEMI8 (8') for use with:

D60—our premier semi-automatic tool, featuring power level adjustment and no-waste disc loads.

SA270—high-quality .27 caliber strip tool for general purpose applications.

D45A—most durable, high-power, semi-automatic tool for hard concrete and steel applications.

MD380—popular 3/8" head diameter tool.

721 The industry preferred tool for the drywall trade.

PTSEMI6 (6') and PTSEMI8 (8') for use with:

Cobra

VIPER

Fixed-length extension poles

6' #VPOL6

8' #VPOL8

Telescoping extension poles adjustable in 1 foot increments

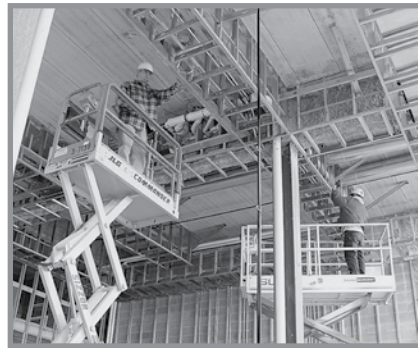
6'-12' #TVPOL612

6'-18' #TVPOL618

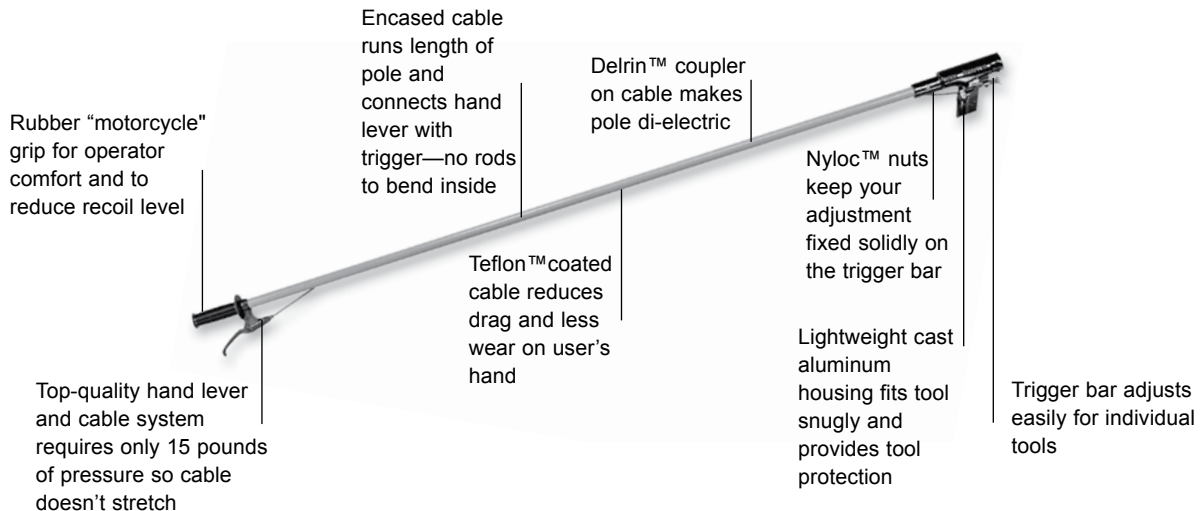
Applications



Ramset Pole Tools are an excellent choice for high-reach fastening applications.



Fast, easy installation from floor level eliminates lift baskets, scaffolds and ladders.



Use with Twister Pre-Tied Wire!

Lagmaster Plus™ is the electrician's pole tool. The unique plug-in heads make it the most efficient tool of its kind. It increases safety by keeping your men on the floor. Use it to install ceiling wire, jack chain, threaded rod, smooth rod and overhead screw installation. Power the pole with any 3/8" or 1/2" battery operated or corded drill.

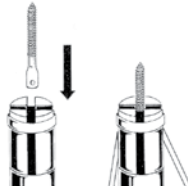
One pole - many applications!

Choose from five different adjustable length models:

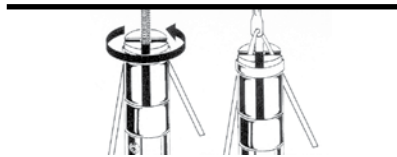
- LM-6 Double 3' (11' ceilings)
- LM-12 Double 6' (18' ceilings)
- LM-18 Triple 6' (24' ceilings)
- LM-24 Triple 8' (30' ceilings)
- LMG-12 Triple 4' (18' ceilings)

Lagmaster Plus™ wire plug hangs 12 or 9 gauge wire. No need for ladders, scaffolding or scissor lifts. Pre-wrapped wire on eye lags require a special plug (pre-wrapped plug).

Hang Wire: Move ring into the up position with set screw



Insert the eye lag screw into secured wire plug. Insert the wire through the hole and bend the tail down.

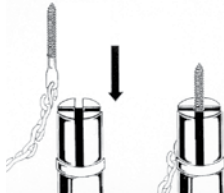


Adjust the pole to length and rotate the screw until it is seated. Pull down on the pole so that the wire is caught on the ring.



Rotate the pole again to twist the wire. Pull the wire through the plug to complete the installation.

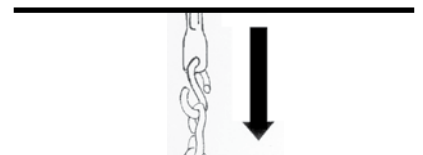
Hang Chain: Move ring into the down position with set screw



Secure a #1 1/2 "S" hook to an acoustical eye lag and to the proper size chain for your job. Insert it into the LagMaster Plus™.



Secure the chain in the magazine so it does not whip when rotating the pole. Now rotate the eye lag screw until it is seated.



Lower the LagMaster Plus™.

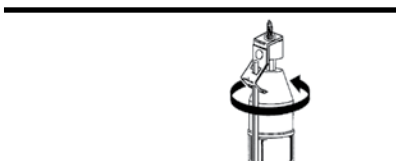
Turn your pole tool into a very long screwdriver. This LagMaster Plus™ plug works with any 1/4" hex driver.

Install smooth rod with a Minerallac™ or Caddy™ spring clip assembly and screw. The Flash fastener is shown here.

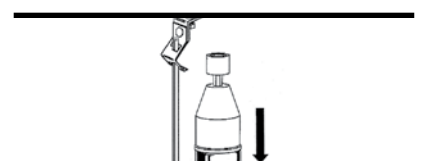
Overhead screw applications: (1/4" hex plug)



Plug in the LagMaster Plus™ 1/4" hex head and insert the proper 1/4" driver. Adjust the LagMaster pole tool to length.



Push the smooth rod between the pole and the wire bale on the LagMaster adjusting pin to keep the rod from whipping while turning in the screw for safety.



Turn in the screw cautiously being careful not to over torque or strip the screw. Remove the tool.

