



Bantam Plug™

Base material - concrete, block, brick and wallboard

Anchor Material - plastic

The Bantam Plug™ anchor is a plastic anchor designed for use with lightweight fixtures with a sheet metal or wood screw. The anchor is recommended for light duty static applications where holding power is not a critical factor. It should not be used overhead.

Cat. No.	Size	Drill Dia.	Min. Depth	Std. Box.	Std. Ctn.	Mstr. Ctn.
7559	6-8 x 3/4"	3/16"	3/4"	100	1000	5000
7569	8-10 x 7/8"	3/16"	7/8"	100	1000	5000
7579	10-12 x 1"	1/4"	1"	100	1000	5000
7589	14-16 x 1 1/2"	5/16"	1 1/2"	50	500	2500

Kits - Slotted/Phillips Pan Head Sheet Metal Screws

Cat. No.	Kit No.	Anchor Size	Screw Size	Min. Depth	Anchors & Screws	Std. Ctn.
8934	8-8	8-10	8 x 1"	7/8"	100	10
8936	8-10	10-12	10 x 1"	1"	100	10
8938	8-12	10-12	12 x 1"	1"	100	10

100 anchors and screws plus one drill bit per kit



Combination Slotted Phillips Head Polly™

Base material - plaster, wallboard, block, hollow tile and plywood

Anchor material - carbon steel

The Polly™ is a sleeve type hollow wall anchor designed for use in base materials such as plaster, wallboard, concrete block, hollow tile or plywood.

Cat. No.	Size	Screw Length	Drill Dia.	Wall Thickness	Std. Box	Std. Ctn.
2100	1/8" XS	1 1/16"	5/16"	1/8"-1/4"	100	500
2101	1/8" S	1 3/4"	5/16"	3/8"-1/2"	100	500
2102	1/8" L	2 1/4"	5/16"	5/8"-1"	100	500
2103	1/8" XL	2 11/16"	5/16"	1 1/4"-1 1/2"	50	250
2111	3/16" S	2"	3/8"	3/8"-5/8"	50	250
2112	3/16" L	2 1/2"	3/8"	3/4"-1 1/8"	50	250
2113	3/16" XL	3"	3/8"	1 1/4"-1 3/4"	25	125
2121	1/4" S	2 1/4"	7/16"	3/8"-1/2"	50	250
2122	1/4" L	2 3/4"	7/16"	5/8"-1 1/8"	50	250
2123	1/4" XL	3 3/8"	7/16"	1 1/4"-1 3/4"	25	125

XS-Extra Short S-Short L-Long XL-Extra Long



Drive Polly™

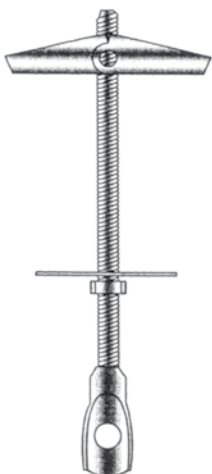
Cat. No.	Size	Screw Length	Wall Thickness	Std. Box	Std. Ctn.
2180	1/8" x XS	1 3/8"	1/8"-1/4"	100	500
2182	1/8" S	2"	3/8"-1/2"	100	500
2184	1/8" L	2 3/8"	1/2"-3/4"	100	500

XS-Extra Short S-Short L-Long XL-Extra Long



Polly™ Setting Tool (Fits All Sizes)

Cat. No.	Description	Std. Box	Std. Ctn.
2150	Polly™ Setting Tool	1	1



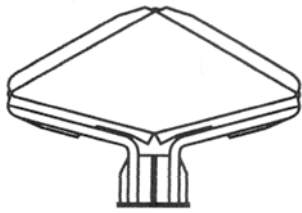
Tie Wire Acoustical Toggle

Cat. No.	Size	Tie Wire Hole Size	Drill Dia.	Std. Box	Std. Ctn.
4247	1/4" x 4"	7/32"	5/8"	100	100
4257	1/4" x 5"	7/32"	5/8"	100	100



Toggle Wings Only

Cat. No.	Screw Size	Drill Dia.	Std. Box	Std. Ctn.
4000	1/8"	3/8"	100	500
4020	3/16"	1/2"	100	1000
4220	1/4"	5/8"	100	1000
4330	5/16"	7/8"	50	500
4430	3/8"	7/8"	50	500
4540	1/2"	1 1/4"	25	25

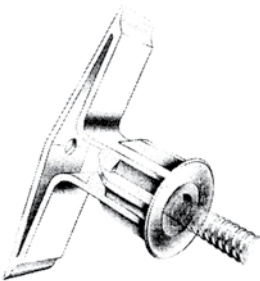


Poly Toggle™ Plastic Hollow Wall Anchor

Base material - wallboard or solid masonry
Anchor material - plastic

The Poly-Toggle® is a screw actuated hollow wall anchor for use in paneling, wallboard and solid masonry available in 6 sizes to match the most common wall thicknesses. In solid base materials, the anchor can be used by removing the outer wings. The performance of this product depends on the integrity of the base material in which it is installed. The anchor is recommended for light duty static application where holding power is not a critical factor.

Cat. No.	Size	Wall Thickness	Drill Dia.	Std. Box	Std. Ctn.
2302	Mini	1/8"	5/16"	100	1000
2303	Short	3/8"	5/16"	100	1000
2304	Medium	1/2"	5/16"	100	1000
2305	Long	5/8"	5/16"	100	1000
2306	Extra Long	3/4"	5/16"	100	1000
2307	Super Long	1"	5/16"	100	1000



Pop Toggle™

Base material - gypsum wallboard, plaster, some hollow masonry
Anchor material - plastic

Pop Toggle™ fasteners are hollow wall anchors ideal for static applications requiring light to medium load performance. Installation is very fast, needing a pre-drilled 5/16" diameter hole. The fastener pre-installs without a screw, allowing for easy placement and removal of the fixture. Pop Toggle™ fasteners are not recommended for use overhead or applications where holding values are critical.

Cat. No.	Description	Std. Box	Std. Ctn.
04060	Pop Toggle™ Small	100	1000
04062	Pop Toggle™ Medium	100	1000
04064	Pop Toggle™ Large	100	1000

Legs® Wallboard Anchor

PRODUCT DESCRIPTION

The Legs anchor is a one piece drive type anchor designed for use in hollow gypsum wallboard for light to medium duty loads. It is made from heat treated carbon steel which is zinc coated using a special plating process and can be used with No. 6 or No. 8 screws.

The Legs anchor is a fast, easy to use expansion anchor designed for use in wallboard. As the screw enters the anchor, it engages the pre-formed tabs in each leg causing them to expand outwards into the base material. Removal of the anchor, if required, is easy. Once removed, the anchor leaves a small slit in the wallboard versus the gaping holes left with other types of hollow wall anchors.



Legs

ANCHOR MATERIAL

Carbon Steel

ANCHOR SIZE RANGE (TYP.)

Use with No. 6 or No. 8 screws

SUITABLE BASE MATERIALS

Wallboard

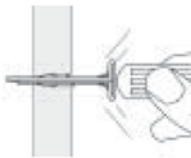
FEATURES AND BENEFITS

- Fast and easy to use
- Leaves small "slit" in wallboard, versus larger holes left with other wall anchors

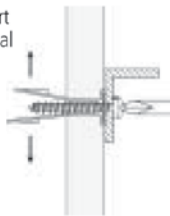
MATERIAL AND INSTALLATION SPECIFICATIONS

Anchor Component	Component Material
Anchor Body	Heat Treated Spring Steel

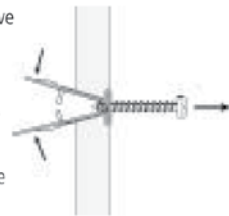
Place the tip of the anchor against the face of the wallboard and tap in with a hammer or back of a screwdriver until the flange is seated flush against the wallboard



Locate the fixture and insert a No. 6 or No. 8 sheet metal screw through the fixture hole into the installed anchor. Tighten the screw until the fixture is securely seated against the base material and the anchor is fully expanded.



To Remove – Remove the screw and the fixture, then insert the screw into the anchor one turn. Pull on the screw to slide the anchor out of the slit in the face of the wallboard.



PERFORMANCE DATA

Ultimate and Allowable Load Capacities for Legs in Wallboard¹

Load	3/8" Wallboard		1/2" Wallboard		5/8" Wallboard		3/4" Wallboard	
	Tension lbs. (kN)	Shear lbs. (kN)	Tension lbs. (kN)	Shear lbs. (kN)	Tension lbs. (kN)	Shear lbs. (kN)	Tension lbs. (kN)	Shear lbs. (kN)
Ultimate Loads	60 (0.3)	85 (0.4)	70 (0.3)	115 (0.5)	95 (0.4)	165 (0.7)	100 (0.5)	170 (0.8)
Allowable Loads	15 (0.1)	20 (0.1)	20 (0.1)	30 (0.1)	25 (0.1)	40 (0.2)	25 (0.1)	45 (0.2)

1. Allowable load capacities listed are calculated using an applied safety factor of 4.0

ORDERING INFORMATION

Legs Drywall Anchor

Cat. No.	Description	Standard Box	Standard Carton	Wt./100
2336	Legs Wallboard Anchor	100	1,000	3/4
2335	Legs Anchor, No. 8 x 1" Screw	100	1,000	1 3/4



Master Pack

Cat. No.	Description	Standard Box	Standard Carton	Wt./100
2338	Legs Wallboard Anchor	–	5,000	3/4
2337	Legs Wallboard Anchor	–	5,000	3/4

Legs Anchor Kit

Cat. No.	Description	Standard Box	Standard Carton	Wt./100
2360	Legs Wallboard Anchor Kit 50 Anchors and No. 8 x 1" Screws	1	10	9