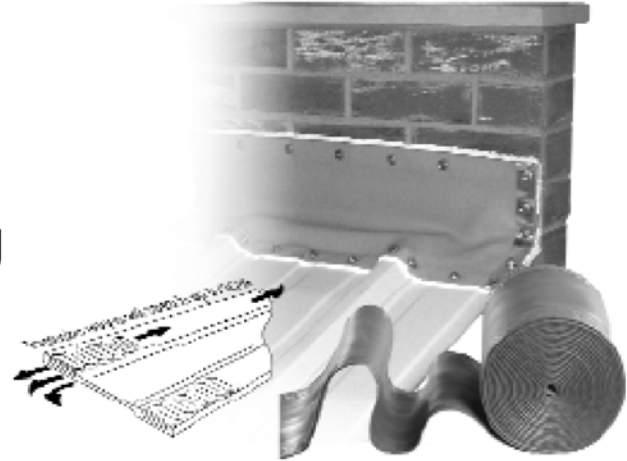




DEKSTRIP™

Expandable Edged Flashing

Stretches to any shape, seals & stays.



Applications

- Large square & round ducts & penetrations
- Chimneys
- Skylights
- Parapet Flashing
- Expansion Joints
- Stepped Roof
- Dissimilar roof profiles
- Transition wall
- Gambrel roof
- Flash between dissimilar materials

Product Features

- 20 year warranty
- Wraps around almost any profile
- Paintable after installation
- TPE has a continuous service temperature range of -58°F to +240°F
- Serpentine edges stretch up to 25% for added length
- Great for large round pipes
- Handles vibration & expansion

Product Specifications

Material Grey TPE

Base Kit Contents

- Dekstrip material
- 1" x 4' Aluminum termination strip
- 3" x 2' Splice tape

Selector Guide

Base Kit Part No.	Description	Weight	Fasteners Needed (1-1/2" o.c.)
4157910	7" x 75'	26 lb.	1200
4155910	9" x 75'	31 lb.	1200
4156910	12" x 75'	38 lb.	1200
4171910	18" x 50'	30 lb.	800

Accessories for Dekstrip

Part #	Description	Used On
1175100	1/4-14 x 1-1/8" Scots® T/1	Metal roof and wall
3358407	1/4 x 1-3/4" Scots Tapcon	Concrete/masonry
4172910	.040 x 1" x 4' Aluminum Termination Strip	Terminating/joining ends of Dekstrip
4040910	Sikaflex 201 Polyurethane Sealant	Sealing edges on all surfaces
4178910	3" x 2' Splice tape	Splicing, lapping, sealing to all surfaces
3379910	Condrive® 500 Tool	Basic (2) Piece Tapcon® installation tool
3103910	Condrive® 1000 Tool	(2) Piece Tapcon® installation tool
3119910	Condrive® 2000 Tool	(1) Piece Tapcon® installation tool

DEKSTRIP™ EXPANDABLE EDGE FLASHING

PRODUCT REPORT NO. 040701

Installation Guidelines

Basic Installation



1. Snap a chalk line to provide a guide for applying sealant.



2. Apply a continuous bead of sealant along chalk line.



3. Position top edge of Dekstrip over seal bead and install Buildex fasteners at 1-1/2" maximum intervals on top edge. Repeat steps 1, 2, and 3 for the bottom edge.

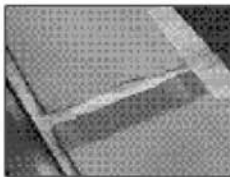


4. Apply additional sealant to both fastened edges for maximum weather-tight sealing.

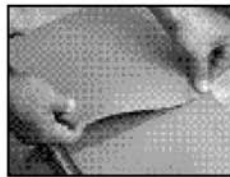
Splicing

Materials Needed:

- Leather Gloves
- Heat Gun
- 3" x 2' splice tape
- Shears or scissors



1. Apply splice tape to Dekstrip.



2. Position second Dekstrip over tape & press in place.



3. Apply heat and press firmly to seal edges.

Detailed Instructions

1. Cut splice tape (supplied in Dekstrip carton) to the width needed and remove clear film from one side of the tape. Lining up the edges, press the tape firmly onto the Dekstrip to remove air pockets.
2. Remove remaining film from tape. Apply second piece of Dekstrip over tape and press firmly.
3. Apply heat over spliced area for 1-2 minutes while applying firm pressure over entire spliced area to ensure adhesion.
4. Turn material over and repeat step 3.

Joining ends around round pipes



1. Cut splice tape to length, remove film from one side and apply to Dekstrip.



2. Remove film from top of splice tape.



3. Overlap top piece of Dekstrip and press onto tape.



4. Fold termination strip in half, cut to width, and slide over spliced area.



5. Fasten through top of termination strip, Dekstrip, and back of strip with Scotfasteners or rivets.



6. Apply sealant to all seams.

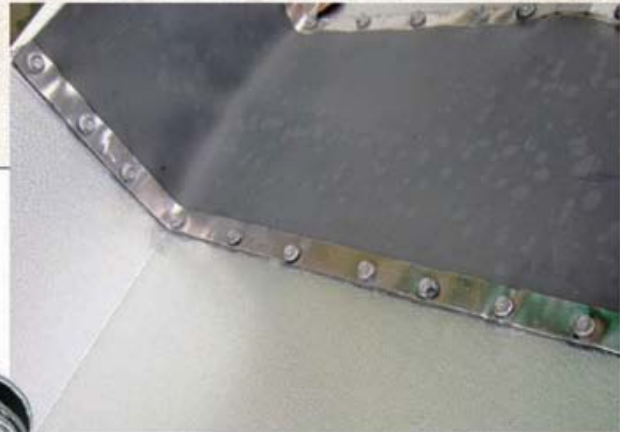
BOX GUTTER EXPANSION JOINT MASTER FLASH®

ROOF FLASHING SYSTEM "STRETCH AND SEAL"

Applications:




- Transition Walls • Parapet Walls • Stepped Roofs
- Corrugated Metal Roofs • Roof Penetrations
- Expansion Joint

ALL NEW



Features:

- 9 & 12 inch wide EPDM linear flashing (.059 thick)
- EPDM Rubber encapsulated expandable metal sides
- Made of grey ozone resistant EPDM
- Available in 12' lengths

	Compound	Part No.		Flashing Details		Price
				Width	Length	
DSK09012	Grey EPDM	LF059G9-03		9" (228.6 mm)	12' (3657.6 mm)	
DSK12012	Grey EPDM	LF059G09-12		12" (304.8 mm)	12' (3657.6 mm)	