

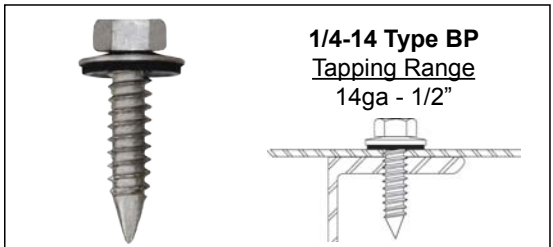
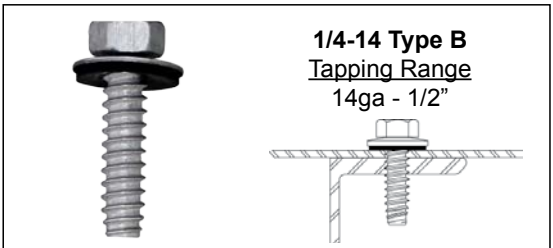
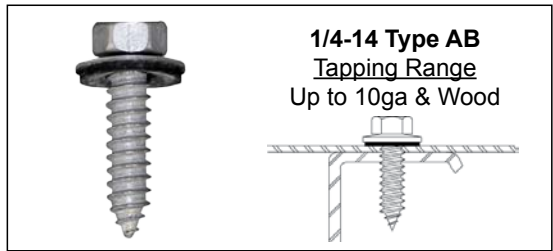
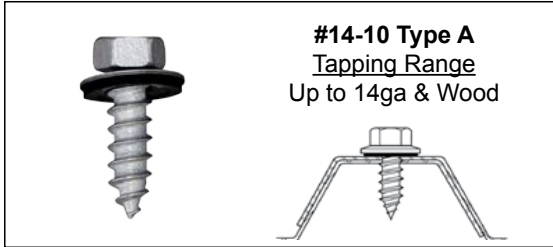


# CARBON STEEL & STAINLESS STEEL SELF-TAPPING SCREWS

**You want'em... we got'em!**

We stock the largest section of self-tapping "sheeting" screws in USA!

- Select from carbon steel, 304 stainless steel, 410 stainless steel, zinc cap head or stainless steel cap head.
- Available with and without BOND-SEAL sealing washers.
- Available with TRI-SEAL® long life coating providing over 1,000 hours salt spray resistance (ASTM B117).
- Lengths up to 8" long!
- Can be painted with our KALIDA-KOTE™ paint process to match your specific color.



Used for alignment into structure.



## Sizes (X = Available)

Description	Point Type	Carbon Steel	304 Stainless Steel	410 Stainless Steel	Stainless Cap Head	Zinc Cap Head	Box Qty.	Wgt. Per M
#14-10 x 3/4"	Type A	X	X				2,500	10.8
#14-10 x 1"	Type A	X	X			X	2,500	14.2
#14-10 x 1-1/2"	Type A	X	X			X	1,500	19.1
#14-10 x 2"	Type A	X	X				1,000	23.4
#14-10 x 2-1/2"	Type A	X	X				1,000	28.1
#14-10 x 3"	Type A	X	X				500	34.1
#14-10 x 4"	Type A	X	X				500	45.5
#14-10 x 5"	Type A	X	X				300	52.8
#14-10 x 6"	Type A	X	X				250	60.1
1/4-14 x 3/4"	Type AB	X	X		X	X	2,500	12.5
1/4-14 x 1"	Type AB	X	X	X	X	X	2,500	14.9
1/4-14 x 1-1/2"	Type AB	X					1,500	19.7
1/4-14 x 1-3/4"	Type AB		X				2,000	23.4
1/4-14 x 1"	Type B	X	X				2,500	14.1
1/4-14 x 1-1/2"	Type B	X	X				1,500	19.5
1/4-14 x 2"	Type B	X	X				1,000	23.1
1/4-14 x 2-1/2"	Type B	X	X				1,000	29.0
1/4-14 x 3"	Type B	X	X				500	33.3
1/4-14 x 4"	Type B	X	X				500	43.4
1/4-14 x 5"	Type B	X	X				300	53.5
1/4-14 x 6"	Type B		X				250	62.2
1/4-14 x 8"	Type B		X				200	81.0
1/4-14 x 1"	Type BP		X				2,000	17.0
1/4-14 x 1-3/4"	Type BP		X				2,000	23.4
#17-14 x 1"	Type AB	<sup>1</sup> X	X		<sup>1</sup> X	X	2,000	18.9
#17-14 x 1-1/2"	Type AB	X	X		X	X	1,500	28.4

<sup>1</sup>Available with VRT® technology.

Refer to the back for technical information and drill bit size.

**Screwgun Speed:** 1,000 rpm maximum

**Oversize or special sealing washers available!**

### Available Head Styles



**3/8" Hex Head (Standard)**



**3/8" Hex Washer Head (#17-14 VRT® Only)**



**3/8" Zinc Cap Head**



**5/16" Stainless Cap Head**



## Fastener Data and Submittal Sheet



### Material Information

Product: TFC Tapping Screws  
General Specification: ANSI B18.6.4, AC 118)

Material: C 1018 / C 1022  
410 Stainless Steel

Heat Treat: Case Hardened

Finish: .0003" Zinc Plated - 24 hrs salt spray /  
No red rust  
Optional: TRI-SEAL Coated – 1,000 hrs  
salt spray / No red rust

Material: Type 304 Stainless Steel (18-8)

Heat Treat: None

Finish: Type B & BP: .0003" Min. Cad Plating (For lubricity)

Type A & AB: .0003" Min. Zinc Plating (For lubricity)

Salt Spray: >2,000 hrs / No red rust

### Application and Description

#### Carbon Steel Screws

These general purpose screws are designed for normal atmospheric conditions. They should not be used in heavy industrial applications or close proximity to the ocean where corrosion can occur. They are case hardened and can tap up to 1/2" thick steel using the appropriate hole size listed on this sheet.

#### 410 Stainless Steel Screws

These screws can be used in mild atmospheres, steam, and many mild chemical environments. They provide superior strength and are plated or coated to provide lubricity during tapping. 410 screws may show signs of red rust but will not rust as quickly as carbon steel screws. Not recommended for use in aluminum connection. Expansion of the aluminum may stress the screw to failure due to its brittleness.

#### 304 Stainless Steel Screws

These screws are used in applications that require superior corrosion resistance or ductility. The chromium in the material reacts with oxygen forming a thin, invisible, non-reactive chromium oxide film. It is resistant to ordinary rusting in wastewater treatment, food-processing environments, and a wide variety of chemicals. 304 stainless steel screws are slightly magnetic caused during head and thread forming. They are not heat treated and are plated to provide lubricity that helps minimize thread roll-over caused during tapping.

### Pressure Treated or Fire Treated Wood Connections

Screw made of 410 or 300 series stainless steel is recommended. Carbon steel screws must be hot dipped galvanized or TRI-SEAL coated. Do not use standard, zinc plated, carbon steel screws.

### Sealing Washer Information

Carbon Steel Screws: 15MM O.D. Galvanized Steel / EPDM.

Stainless Steel Screws: 15MM O.D. Stainless Steel / EPDM.

#17 with VRT® Screws: 3/4" O.D. Galvanized Steel / EPDM.

Zinc Cap Head and Stainless Cap Head: 5/8" O.D. Head / EPDM.

### Mechanical Properties

Screw Type	Major Dia.	Torsional Lb-in.	Material	Tensile Lbs.	Shear Lbs.
#14-10 Type A	.235"	125	Carbon Steel	3,150	2,150
	.246"		304 SS	2,925	1,925
1/4-14 Type AB & B	.237"	150	Carbon Steel	3,850	2,575
	.246"		304 SS	3,700	2,800
#17-14 Type AB	.280"	170	Carbon Steel	5,890	3,285
	.290"		304 SS	5,200	3,125

### Hole Size and Pullout Values



Screw Type	DRILL BITS SIZES													
	26ga (.018")	24ga (.024")	22ga (.030")	20ga (.036")	18ga (.048")	16ga (.060")	14ga (.075")	12ga (.105")	1/8" (.125")	10ga (.134")	3/16" (.187")	1/4" (.250")	3/8" (.375")	1/2" (.500")
#14-10 Type A	1/8"	5/32"			3/16"			Not recommended						
1/4-14 Type AB	1/8"	5/32"			3/16"			#7		Not recommended				
1/4-14 Type B	Not recommended					3/16"		#7		#1				
1/4-14 Type BP	Not recommended					3/16"		#7		#1				
#17-14 Type AB	3/16"				1/4"				Not recommended					

Use 135° split point drill bits for optimal performance.

Screw Type	PULLOUT Average Ultimate - Pounds														
	26ga (.018")	24ga (.024")	22ga (.030")	20ga (.036")	18ga (.048")	16ga (.060")	14ga (.075")	12ga (.105")	1/8" (.125")	10ga (.134")	3/16" (.187")	1/4" (.250")	5/16" (.375")	3/8" (.312")	1/2" (.500")
#14-10 Type A	270	363	363	459	657	1,194	1,368	1,780	1,812						
1/4-14 Type B	216	344	344	411	541	686	983	1,698	2,242	2,855	2,693	3,695	3,746	3,784	3,790
1/4-14 Type AB															
1/4-14 Type BP															
#17-14 Type AB	410			522		805	996								

DISCLAIMER: ALL TEST RESULTS AND FASTENER RECOMMENDATIONS ARE BASED ON LABORATORY CONDITIONS. BECAUSE ACTUAL JOB SITE CONDITIONS VARY AND ARE UNCONTROLLABLE BY TFC, WE ASSUME NO LIABILITY FOR THE USE OF THIS INFORMATION.



We offer a complete line of metal-to-wood screws that provide superior corrosion protection in the most harsh environments.

Choose either the **PANEL-TITE®** with stainless steel cap head or all stainless steel for attaching aluminum panels to wood.



**PANEL-TITE® SCH**  
**Stainless Cap Head**  
**w/ Flange Sealer**

- Use on 20yr warranty roof systems.
- Carbon steel shank with TRI-SEAL™ coating
- Provides outstanding corrosion protection.



**PANEL-TITE® SS**  
**Stainless Steel**  
**w/ Aluminum Bonded-Sealer Washer**

- 305 stainless steel.
- Used in aluminum applications.
- Preferred screw for ACQ lumber.



**SIZES**

	Description	Drilling Thickness	Part No.	Carton Quantity
A	#10-12 x 1" GP	20ga. max	10100HWGSYSWSC	2,500 pcs.
B	#10-12 x 1-1/2" GP	20ga. max	10150HWGSYSWSC	2,000 pcs.
C	#10-12 x 2" GP	20ga. max	10200HWGSYSWSC	2,000 pcs.
D	#10-12 x 2-1/2" GP	20ga. max	10250HWGSYSWSC	1,000 pcs.

**SIZES**

	Description	Drilling Thickness	Part No.	Carton Quantity
E	#9-15 x 1" GP	.040 AL	DD9100PW3SS	3,000 pcs.
F	#9-15 x 1-1/2" GP	.040 AL	DD9150PW3SS	2,500 pcs.
G	#9-15 x 2" GP	.040 AL	DD9200PW3SS	2,000 pcs.
H	#9-15 x 2-1/2" GP	.040 AL	DD9250PW3SS	1,500 pcs.

**TECHNICAL DATA**

**MATERIAL AND PHYSICAL PROPERTIES**

Diameter & Point: #10-12 Gimlet Point  
Material: Carbon Steel Shank, 304 Stainless Steel Cap Head  
Plating: TRI-SEAL™ Coating  
Head Style: 1/4" HWH  
Thread: #10-12 Double Lead  
Salt Spray: 1,000 hrs.

Diameter & Point: #9-15 Gimlet Point  
Material: 305 Stainless Steel  
Plating: Passivated  
Head Style: 1/4" HWH  
Thread: #9-15 Double Lead

**FASTENER STRENGTH**

Size	Tensile (lbs.)	Shear (lbs.)	Torsional (Inch-lbs.)
#9-15	1,500	980	50
#10-12	2,100	1,400	65

**Pullout Values in Wood (Carbon Steel or Stainless Steel)**  
**Ultimate Average Load in Pounds Force**

Fastener Dia. & Point	Wood Type						
	1/2" Ply	5/8" Ply	3/4" Ply	7/16" OSB	19/32" OSB	23/32" OSB	2 x 4 SYP
#9-15 GP	350	402	548	173	344	431	887
#10-13 GP	375	505	654	166	357	442	737

Rev JC111011  
Report #T279-10 / Farabaugh Engineering and Testing / 9.30.2010

DISCLAIMER: ALL DATA AND SPECIFICATIONS ARE BASED ON LABORATORY TESTS. APPROPRIATE SAFETY FACTORS SHOULD BE USED BY THE USER OR SPECIFIER. DETERMINING THE PROPER FASTENER IS THE RESPONSIBILITY OF THE USER OR SPECIFIER. BECAUSE APPLICATION CONDITIONS VARY, WE ASSUME NO LIABILITY FOR THE USE OF THIS INFORMATION.



**Full line of high performance wood deck fasteners**



**Coarse Thread - TRI-SEAL COATED**

- Exterior wood screw for outdoor applications including decks, treated wood, patios and fencing.
- TRI-SEAL coated formulated for ACQ treated lumber!



**305 Stainless Steel**

- 305 stainless steel coarse thread deck screw, #2 square drive, type 17 point.
- Exterior wood screw for outdoor applications including decks, treated wood, patios and fencing applications that require a high degree of corrosion resistance.
- For best possible corrosion resistance in ACQ Treated Lumber!
- Type 17 point provides superior penetration through the hardest of woods.
- 305 stainless steel provides maximum strength with superior corrosion protection.

**SIZES**

Carbon Steel

Size	Carton Quantity	Drive Style	Carton Weight (lbs.)
6 x 1"	10M	+	32
6 x 1-1/4"	8M	+ / □	30
6 x 1-5/8"	5M	+ / □	24
6 x 2"	3.5M	+ / □	21
8 x 2-1/2"	2.5M	+ / □	24
8 x 3"	2M	+ / □	24
10 x 3-1/2"	1.5M	+ / □	28
10 x 4"	1M	+ / □	24
10 x 5"	1M	+	27
10 x 6"	1M	+	30

305 Stainless Steel

Size	Carton Quantity	Carton Weight (lbs.)
8 x 1-1/4"	5M	28
8 x 1-5/8"	4M	29
8 x 2"	3M	25
10 x 2-1/2"	2M	25
10 x 3"	1.5M	23
10 x 3-1/2"	1M	18

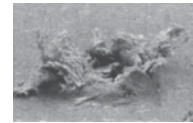


**Composite Deck Screws - COATED**

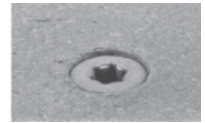
- For flush mounting of the fasteners without mushrooming!

SIZE: #10 x 2-3/4"

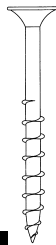
Ordinary Bugle Head



Seats Flush



**Dec-King Exterior Wood Screws**



**Product Features**

Coated with Climacoat® for maximum resistance to corrosion, staining and streaking inside the lumber and on the deck.

Approved for use is ACQ treated lumber.

Outperforms all zinc based platings in treated wood.

Pullout strength is superior over nails.

Eliminates wood splitting, nail pops, hammer marks and bent nails.

Now available in both #2 Phillips and #2 Square Drive.

**Selector Guide**

Description	Head Style	Part Number	Applications
6 x 1-1/4"	#2 Phillips Bugle	2176500	1" x 4" or 1" x 6" Base Trim; Lattice
6 x 1-5/8"	#2 Phillips Bugle	2136500	1" x 4" or 1" x 6" Base Trim; Ballisters; Lattice
7 x 2"	#2 Phillips Bugle	2138500	5/4" x 4" or 5/4" x 6" Radius Edged Decking; 1" x 4" or 1" x 6" Base Trim; Ballisters; Lattice
8 x 2-1/2"	#2 Phillips Bugle	2140500	5/4" x 4" or 5/4" x 6" Radius Edged Decking 2" x 4" or 2" x 6" Rail Cap or Base Trim 2" x 6" or 2" x 8"
8 x 3"	#2 Phillips Bugle	2141500	2" x 4" or 2" x 6" Decking 2" x 6" or 2" x 8" Rail Cap or Base Trim
10 x 3-1/2"	#2 Phillips Bugle	2142500	2" x 4" or 2" x 6" Decking 2" x 6" or 2" x 8" Rail Cap or Base Trim

**Performance Data**

**Corrosion Resistance**

Kesternich Results (DIN 50018, 2.0L)

- 25 Cycles - 10% or less red rust

Salt Spray Results (ASTM B117)

- 1000 hours - 10% or less red rust

**Pullout Values (average pounds ultimate) Embedment 2" x 4" Stud Grade S.Y. Pine**

Description	1/2"	3/4"	1"	1-1/4"
6 x 1-1/4"	182	329	422	-
6 x 1-5/8"	182	329	422	620
7 x 2"	189	318	440	630
8 x 2-1/2"	186	290	502	630
8 x 3"	186	290	502	645
10 x 3-1/2"	241	386	522	721

Note: The values listed are ultimate averages achieved under laboratory conditions. An appropriate safety factor should be applied in these values to achieve a design value.



# SPECIALTY STAINLESS STEEL SCREWS FOR MULTI-PURPOSE USE



## Hand Drive Screws | "FY-CEM" "BILLYGOATS" Fiber Cement Screws Metal Stud

- Fasten fiber cement through furring strips to steel studs
- #2 Square drive, #3 Drill Point
- Wafer head
- Threaded to within 5/16" of top of head
- Self-Countersinking nubs under head insure seating of screw heads flush with work surface

### 410 Stainless Steel

Size	Length	Head Size	Carton Count	Item No.
#8	1 5/8"	.390"	100	F08T162WDC
#8	1 5/8"	.390"	1000	F08T162WDM
#8	1 5/8"	.390"	3000	F08T162WDB
#8	2 1/4"	.390"	100	F08T225WDC
#8	2 1/4"	.390"	1000	F08T225WDM
#8	2 1/4"	.390"	2500	F08T225WDB

Type 410 stainless steel can be hardened through heat treatment, giving it the ability to drill through metal. It does not offer the same level of corrosion resistance as either type 305 or 316 stainless steel.



## Hand Drive Screws | "FY-CEM" Fiber Cement Screws - Wood Stud

- #2 square drive, Coarse thread full length
- Type-17 point for fast starts
- Self-countersinking nubs under head insure seating of screw heads flush with work surface
- Threaded to within 5/16" of head
- Use 1-1/4" screws to attach fiber cement siding to stress sk panels
- Use 1-5/8" screws to blind-fasten fiber cement lap siding to wood

### 316 Stainless Steel

Size	Length	Head Diameter	Carton Count	Item No.
#8	1 1/4"	.390"	100	T08C125WQC
#8	1 1/4"	.390"	1000	T08C125WQM
#8	1 5/8"	.390"	100	T08C162WQC
#8	1 5/8"	.390"	1000	T08C162WQM
#8	2 1/4"	.390"	1000	T08C225WQM
#8	2 1/4"	.390"	2000	T08C225WQC



## Hand Drive Screws | K-Lath Modified Truss Head Self-Drilling

- For attaching metal lath to 14 to 20 gauge steel studs
- Hardened type 410 stainless steel for superior corrosion resistance
- Tapping screw threads, #3 drill point

### 410 Stainless Steel Phillips Drive

Length	Size	Carton Qty	Carton Weight	Product Number
9/16"	8	8000	30	F08T056KDP
3/4"	8	6000	26	F08T075KDP
1-1/4"	8	4000	25	F08T125KDP
1-5/8"	8	3000	23	F08T162KDP
2"	8	2500	23	F08T200KDP



## Hand Drive Screws | SHARX Screws with Teeth

- Sharx™ screws bite and hold fast in fiberglass, plywood and wood substitute materials
- Use for projects exposed to harsh marine or many chemically caustic conditions
- Ideal for applying trim, rub rail and molding to fiberglass boat hulls
- Extra-sharp points speed screw starts during assembly
- Specially engineered, high/low thread form incorporates indentations ("teeth") that cut easily and quickly through high-density materials
- Back-out resistance: once driven home, Sharx are locked in place thanks to their "teeth" (the thread indentations will resist back-out even after prolonged vibration)
- Holding power: Pull-out values of Sharx screws exceed those of ordinary tapping screws in fiberglass and wood
- Screws up to 1" in length are fully threaded. Screws more than 1" long are threaded 2/3 of the shank length
- Phillips drive

### 316 Stainless Steel, Flat Head

Size	Length	Head Diameter	Nominal Screw Diameter	100-Count Item No.	1000-Count Item No.
#6	1/2"	.244/.279	.138	T06J050FXC	T06J050FXM
#6	3/4"	.244/.279	.138	T06J075FXC	T06J075FXM
#8	3/4"	.292/.332	.164	T08J075FXC	T08J075FXM
#6	1"	.244/.279	.138	T06J100FXC	T06J100FXM
#8	1"	.292/.332	.164	T08J100FXC	T08J100FXM
#10	1"	.340/.385	.190	T10J100FXC	T10J100FXM
#8	1 1/4"	.292/.332	.164	T08J125FXC	T08J125FXM
#10	1 1/4"	.340/.385	.190	T10J125FXC	T10J125FXM
#8	1 1/2"	.292/.332	.164	T08J150FXC	T08J150FXM
#10	1 1/2"	.340/.385	.190	T10J150FXC	T10J150FXM
#10	2"	.340/.385	.190	T10J200FXC	T10J200FXM

### 316 Stainless Steel, Pan Head

Size	Length	Head Diameter	Nominal Screw Diameter	100-Count Item No.	1000-Count Item No.
#6	1/2"	.256/.270	.138	T06J050PXC	T06J050PXM
#8	1/2"	.306/.322	.164	T08J050PXC	T08J050PXM
#10	1/2"	.357/.373	.190	T10J050PXC	T10J050PXM
#6	3/4"	.256/.270	.138	T06J075PXC	T06J075PXM
#8	3/4"	.306/.322	.164	T08J075PXC	T08J075PXM
#10	3/4"	.357/.373	.190	T10J075PXC	T10J075PXM
#6	1"	.256/.270	.138	T06J100PXC	T06J100PXM
#8	1"	.306/.322	.164	T08J100PXC	T08J100PXM
#10	1"	.357/.373	.190	T10J100PXC	T10J100PXM
#12	1"	.407/.425	.216	T12J100PXC	T12J100PXM
#14	1"	.473/.492	.242	T14J100PXC	T14J100PXM
#8	1 1/4"	.306/.322	.164	T08J125PXC	T08J125PXM
#10	1 1/4"	.357/.373	.190	T10J125PXC	T10J125PXM
#12	1 1/2"	.407/.425	.216	T12J150PXC	T12J150PXM
#14	1 1/2"	.473/.492	.242	T14J150PXC	T14J150PXM
#12	2"	.407/.425	.216	T12J200PXC	T12J200PXM
#14	2"	.473/.492	.242	T14J200PXC	T14J200PXM